



POT COVER BLACK TERRE D'OMBRES

Designer

Minimum Design

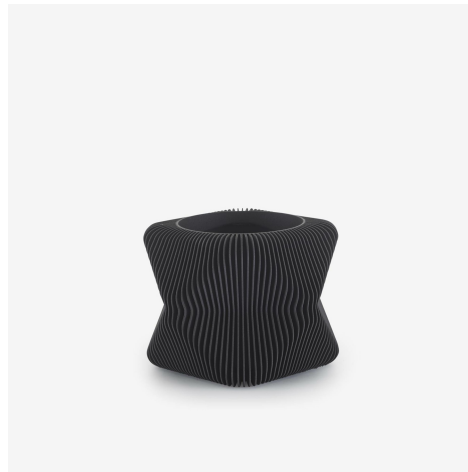
Technical characteristics

Terre d'ombres is a minimalist, Scandinavian-influenced family of indoor pot covers in either noir or naturel. Each vase has a label stating the time it took to produce. Pot cover made from 3D-printed bio-plastic (70 % maize starch / 30 % recycled wood).

More information on

www.cinna.fr

© Ligne Roset 2024



DIMENSIONS

Height 145 mm		Width 190 mm		Depth 190 mm		Weight 0.7
						kg