



SET OF 2 VASES AMETHYSTE ASYMETRIC

Designer

Piyush & Gaurav

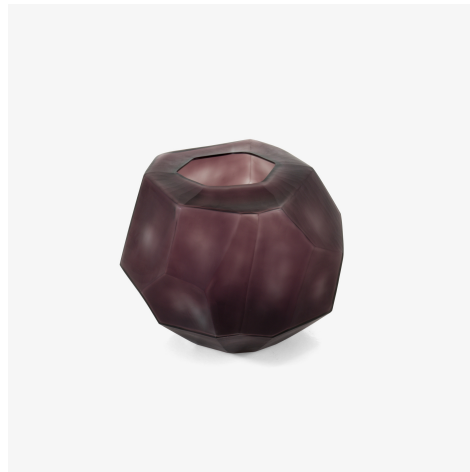
Technical characteristics

The Asymmetric vase is made of moulded tinted glass, with a double layer, mouth-blown, moulded, sculptural shape, faceted like a diamond, semi-opaque finish.

More information on

www.cinna.fr

© Ligne Roset 2024



DIMENSIONS

Height 225 mm		Width 280 mm		Depth 280 mm		Weight 10.2 kg
---------------	--	--------------	--	--------------	--	----------------