

## TERRE D'OMBRES

### Designer

Minimum Design

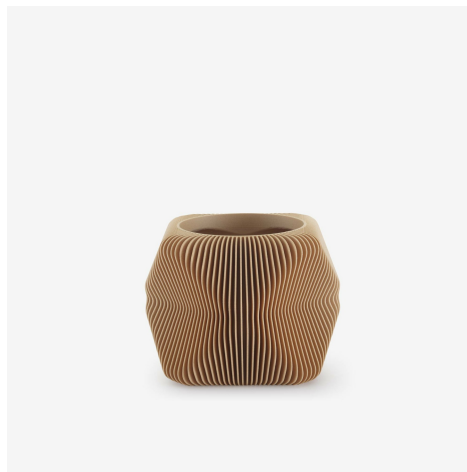
### Technical characteristics

Terre d'ombres is a minimalist, Scandinavian-influenced family of indoor pot covers in either noir or naturel. Each vase has a label stating the time it took to produce. Pot cover made from 3D-printed bio-plastic (70 % maize starch / 30 % recycled wood).

### More information on

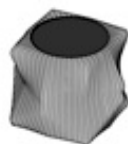
[www.cinna.fr](http://www.cinna.fr)

© Ligne Roset 2023



### PRODUCTS

#### POT COVER NATURAL



#### DIMENSIONS

Height 145 mm

Width 190 mm

Depth 190 mm

Weight 0.7 kg

#### POT COVER BLACK



#### DIMENSIONS

Height 145 mm

Width 190 mm

Depth 190 mm

Weight 0.7 kg