

# SUSPENDED CEILING LIGHT 9 CABLES CALOT

## Designer

Patrick Zulauf

## Description

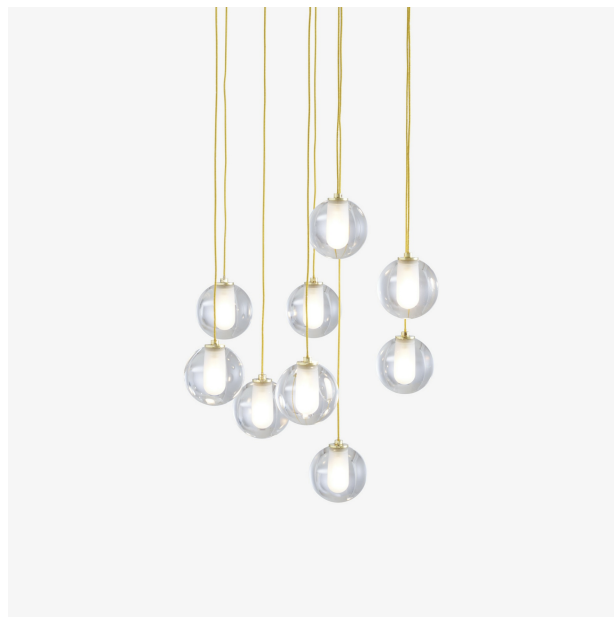
Suspended light with shade in transparent resin Ø 8 cm, with a polished sanded section for the bulb. 2.50m long woven metal cable in a brass-effect finish.

'Coulisstop' height adjustment system.

Epoxy satin white lacquered ceiling fitting H 3 Ø 40 cm. Supplied with 9 x 1.2 W 12 V G4 LED bulbs, colour temperature 3,000K (warm white), 100 Lumens. Non-dimmable LED bulb.

## Technical characteristics

- Table lamp with chromed steel stem, base (Ø 9 - H 3.5 cm) in white marble, white PVC cable and white manual switch.  
Or table lamp with clear matt varnished brass-coated steel stem, base (Ø 9 - H 3.5 cm) in black marble, black PVC cable and black manual switch. Shade (Ø 9 cm) in



## Dimensions

Height 2,610 mm | Diameter 400 mm | Weight 6.45 kg

More information on  
[www.cinna.fr](http://www.cinna.fr)

**Cinna**<sup>TM</sup>

© Ligne Roset 2024

transparent resin with a polished, frosted section for the bulb. Supplied with 1 x 2 W G4 LED bulb, colour temperature 3,000K (warm white), 220 Lumens. - Reading light with chromed steel stem, base (Ø 14 - H 3.5 cm) in white marble, white PVC cable and white manual switch. Or reading light with clear matt varnished brass-coated steel stem, base (Ø 14 - H 3.5 cm) in black marble, black PVC cable and black manual switch. Shade (Ø 9 cm) in transparent resin with a polished, frosted section for the bulb. Supplied with 1 x 2 W G4 LED bulb, colour temperature 3,000K (warm white), 220 Lumens. - Suspended light with shade in transparent resin Ø 8 cm, with a polished sanded section for the bulb. 2.50m long woven metal cable in a brass-effect finish. 'Coulisstop' height adjustment system. Epoxy satin white lacquered ceiling fitting H 2.5 Ø 12 cm or Epoxy satin white lacquered ceiling fitting H 3 Ø 40 cm. Supplied with 1 x 1.2 W 12 V G4 LED bulb, colour temperature 3,000K (warm white), 100 Lumens. Non-dimmable LED bulb.